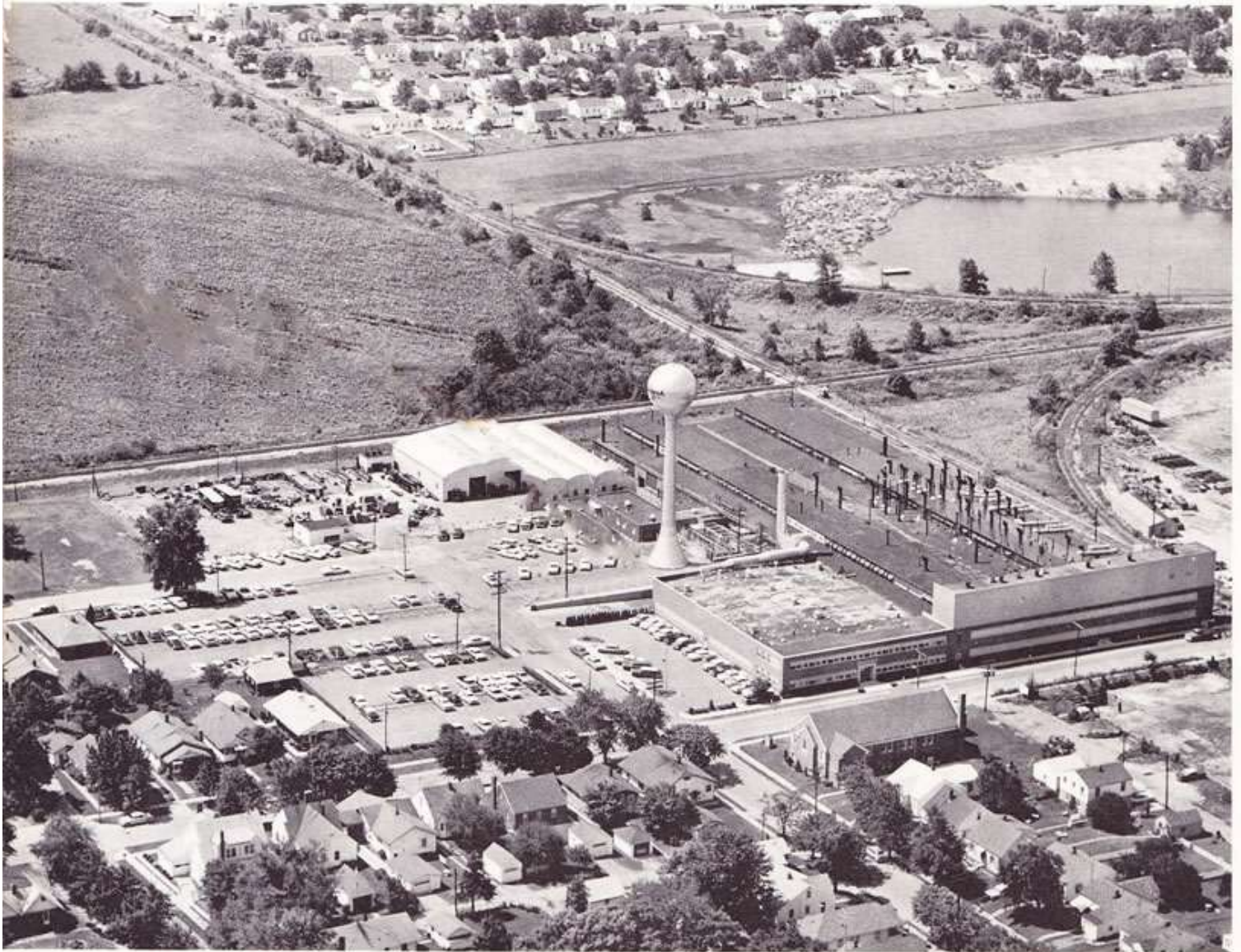


a brief guide to the
ANACONDA
WIRE AND CABLE COMPANY



The Anderson Mill, Anderson, Indiana — Anaconda Wire and Cable Company — was established in 1927 as part of the Maring Wire Company. It became part of Anaconda in 1929. The mill produces various types of magnet wire principally for the automobile industry.



ANACONDA WIRE AND CABLE COMPANY

HOW WE STARTED



The Anaconda Wire and Cable Company was organized in 1929 as a manufacturer of wires and cables for the electrical industry. In a little over three decades, it has established itself as one of the leading companies in the industry.

Early beginnings of the Company follow closely the invention of the incandescent bulb and the establishment of the first power plants in New York City and Chicago in the 1880's. At that time, mills, now part of the Anaconda Wire and Cable Company were built and first started manufacturing wire and cable for electric power.

Anaconda Wire and Cable now produces more than 4,000 different items. Products range in size from wire smaller in diameter than a human hair to complicated cables larger than a man's arm.

The Company's stock is listed on the New York Stock Exchange. As indicated by the name, the Company is a partially-owned subsidiary of The Anaconda Company, one of the world's largest producers of basic metals.

ENGINEERING, RESEARCH and DEVELOPMENT



The Anaconda Wire and Cable Company has one of the largest engineering and research staffs in the industry. General Engineering and General Research Departments are centralized at Hastings-on-Hudson, New York.

There are four principal research laboratories. The country's newest extra-high-voltage laboratory is located at Hastings, as are laboratory divisions for communications cable, defense products, and chemical, electrical, dielectric and metallurgical research. A newly-enlarged magnet wire research facility has been established at Muskegon, Michigan; rubber and plastics research is conducted at Marion, Indiana; and the Communications Cable Center opened in Sycamore, Illinois, in 1963.

MANUFACTURING



The Anaconda Wire and Cable Company has invested many millions of dollars in the expansion, modernization and new construction of plants and the purchase of modern manufacturing equipment. Plants which formed the nucleus of the Company in 1929 have been expanded with the demands for new products and are now many times their original size.

All mills have their own product testing laboratories. Quality control laboratories at each plant keep a constant check on products.

There are eight plants in the United States. They are located at Anderson, Indiana; Great Falls, Montana; Hastings-on-Hudson, New York; Marion, Indiana; Muskegon, Michigan; Orange, California; Sycamore, Illinois; and Watkinsville, Georgia. The Company has a minority interest in Condumex, Mexico City.

PRODUCT DISTRIBUTION

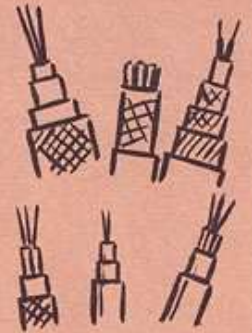
Each plant carries complete warehouse stocks of leading products manufactured, including some lines produced at other mills. Distribution centers are located at Arlington, Texas; Atlanta, Georgia; Bound Brook, New Jersey, Los Angeles, California; Portland, Oregon; and San Leandro, California.



PRINCIPAL PRODUCTS

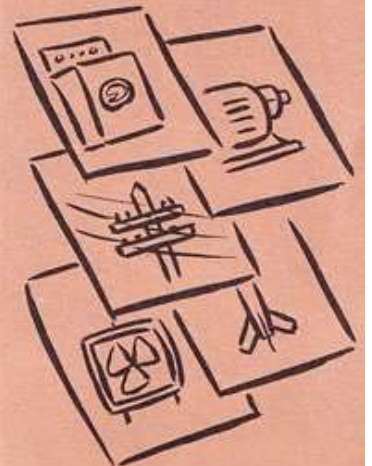
Anaconda's more than 4,000 products are concentrated in the following general groupings:

Copper and Aluminum Rod	Extra-High Voltage Power Cable
Bare and Tinned Copper Wire and Cable and Copperweld Conductor	Rubber and Plastic-Insulated Power and Control Cable
Bare Aluminum and ACSR Conductor	Building Wire and Cable
Line Wire	Portable Cord and Cable
Service Drop Cable	Communication Cable
Magnet Wire	Electronic Wire and Cable
Paper-Insulated Power Cable	Missile Ground Support, Power and Control Cable
Varnished-Cambric Insulated Power Cable	Accessories



INDUSTRIES SERVED

Armed Forces, Atomic Energy, Automotive, Aviation, Building, Chemical, Communication, Construction, Electric Utilities, Electrical Distributors, Electronics, Electrical Manufacturing, Food, Marine, Metal Fabrication, Mining, Motion Picture, Paper, Petroleum, Radio and Television, Railroad, Rural Electrification, Shipbuilding, Telephone and Telegraph, Textile, U. S. Government.





GENERAL OFFICES

ANACONDA WIRE AND CABLE COMPANY

605 THIRD AVENUE, NEW YORK, N.Y. 10016

▲ PLANTS

Anderson, Indiana
Great Falls, Montana
Hastings-on-Hudson, New York
Marion, Indiana
Muskegon, Michigan
Orange, California
Sycamore, Illinois
Watkinsville, Georgia

△ SALES OFFICES

EASTERN REGION, 605 Third Avenue, New York, N. Y. 10016

Boston, Massachusetts
Charleston, West Virginia
Newark, New Jersey
New Haven, Connecticut
New York, New York

Philadelphia, Pennsylvania
Pittsburgh, Pennsylvania
Richmond, Virginia
Syracuse, New York
Washington, D.C.

▲ LABORATORIES

Hastings-on-Hudson, New York
Marion, Indiana
Muskegon, Michigan
Sycamore, Illinois

SOUTHERN REGION, 270 Peachtree Street, Atlanta, Georgia 30303

Atlanta, Georgia
Birmingham, Alabama
Charlotte, North Carolina
Dallas, Texas

Houston, Texas
New Orleans, Louisiana
Tampa, Florida
Tulsa, Oklahoma

▲ DISTRIBUTION CENTERS

Arlington, Texas (Dallas)
Atlanta, Georgia
Bound Brook, New Jersey
Los Angeles, California
Portland, Oregon
San Leandro, California

In addition, products are distributed from the eight plants.

CENTRAL REGION, 2590 E. Devon Ave., Des Plaines, Illinois 60018

Chicago, Illinois
Cincinnati, Ohio
Cleveland, Ohio
Des Moines, Iowa
Detroit, Michigan

Kansas City, Missouri
Milwaukee, Wisconsin
Minneapolis, Minnesota
St. Louis, Missouri

GOVERNMENT AGENCIES

1511 "K" Street, N.W.
Washington 5, D.C. 20005

WESTERN REGION, 750 139th Ave., San Leandro, California 94578

Denver, Colorado
Los Angeles, California
Phoenix, Arizona
Salt Lake City, Utah

San Francisco, California
Portland, Oregon
Seattle, Washington

